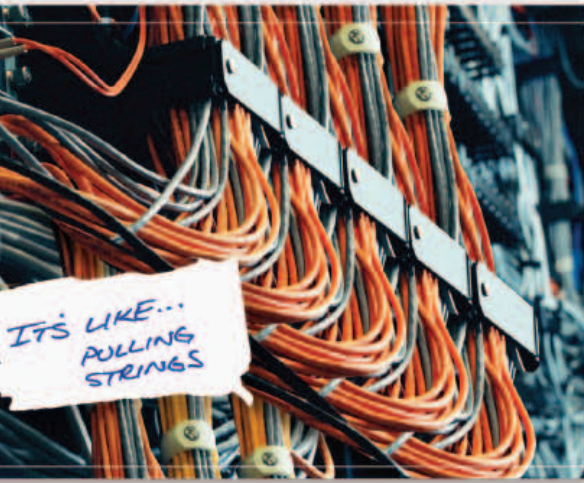


NEC Installation Projectors MT Series



MT1075 and MT1065

An essential element of your communication infrastructure.

The MT Series installation projectors include innovative features and technologies from NEC's renowned design labs.

smart.

Smart design makes set-up and use second nature.

- **Automatic intelligence.** The built in image sensor automatically focuses, adjusts color tones, keystone corrects, and squares the image with the touch of a button.
- **Plenty of power.** Autosense™ intuitively syncs the projector with most computer signals and features one-touch image optimization.
- **USB flexibility.** Play back presentations or display images stored as .jpgs from standard USB keys.
- **Adapts for special needs.** ADA508 compliant for hearing-impaired and colorblind users supporting closed caption display and black & white menu options.
- **Anything's a screen.** Project on spheres, cylinders, corner angles and more.

powerful.

Multi-talented and able.

- **Multiple lenses.** Quickly install optional lenses that allow multiple room use from one projector.
- **Break the ANSI barrier.** 4200 ANSI (MT1075) and 3400 ANSI (MT1065).
- **Advanced AccuBlend™.** Ensures detailed images even when non-native resolution sources are connected to the projector.
- **Network connectivity.** Communicate with the projector with or without wires through an existing infrastructure or an on-the-fly peer-to-peer connection.

efficient.

Economical and cost effective.

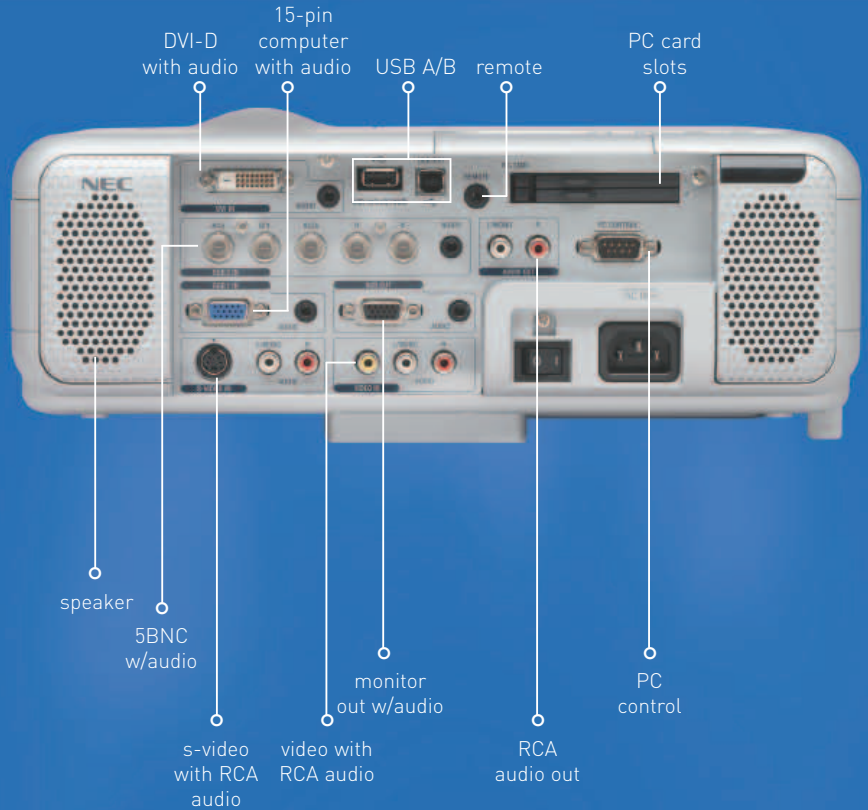
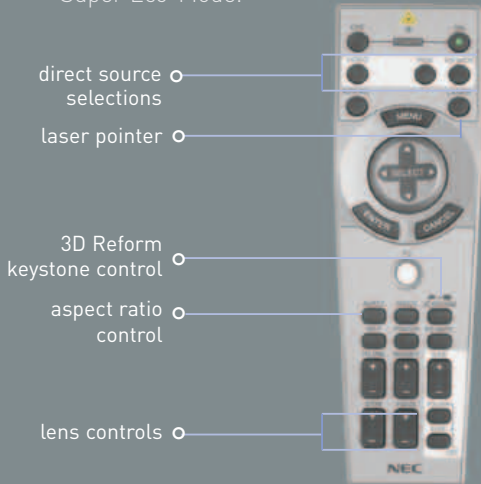
- **Advanced power management.** Meets Executive Order 13221 for efficient operation supporting standby power consumption of <1 watt and a hard power switch to completely shut down the projector.
- **Extended lamp life.** Eco-mode™ technology increases lamp life by up to 50%. An optional long life lamp is available that doubles normal lamp life.
- **Free asset management tools.** Networking tools come standard.
- **Security features.** Enhanced multi-level security features protect your investment.

The MT Series: smart, powerful and efficient.

intuitive design.

The MT Series combines brains and brawn with modern efficiency to get the job done.

- **Flexible networking.** Wireless or wired, the MT Series is all about connecting.
- **Monitor output.** Easily connect to an external monitor for use with a desktop computer. **Variable audio out.** Control external amplified audio through the projector.
- **Input/Output panel.** Connect with multiple sources and get the kind of functionality usually found in standard switchers.
- **Quiet operation.** Nearly silent at <29dB in Super Eco-Mode.



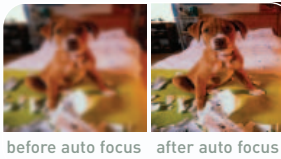
NEC



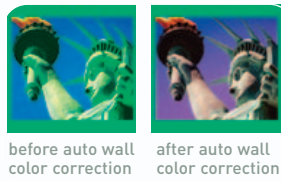
Product/Accessories/Services

Order Code	Description
MT1075	MT1075, XGA, 4200 ANSI lumens projector
MT1065	MT1065, XGA, 3400 ANSI lumens projector
MT60-10RL	1:1 Short throw lens, MT1075, MT60 Series
MT60-26ZL	2.7-4.2:1 power zoom and power focus lens, MT1075, MT60 series
MT70LP	Replacement lamp for MT1075
MT60LP	Replacement lamp for MT60 series
MT60LPS	Optional Extended life lamp for MT1075, MT60 Series
MT60CM	Ceiling mount kit MT1075, MT60 Series
MT60TC	Local transport/storage case w/wheels for MT1075, MT60 Series
MT60ATA	ATA shipping case for MT1075, MT60 Series
SWL-2100N	Wireless network card
VLMPL-01	1 year limited parts and labor extension
VLMIC-01	2nd year limited InstaCare coverage
VLMIC-02	3rd year limited extended warranty plus 2nd and 3rd year limited InstaCare coverage
VLMTC-02	For duration of the standard warranty (2 years), loaner or repair services are available in EU countries, Japan, and Australia (for U.S. and Canadian residents traveling abroad).

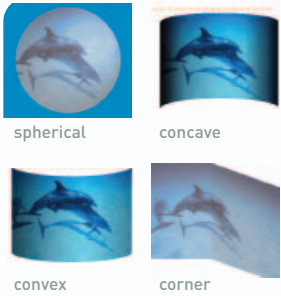
Power + Intelligence = Efficiency



○ auto focus



○ auto wall color correction



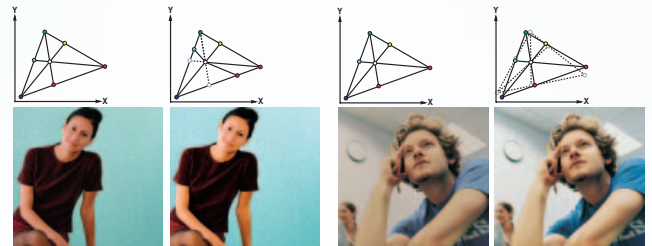
○ geometric correction tool

3D Reform™ – enhanced keystone correction allows for horizontal, vertical and diagonal image correction for aligned images even when the projector is set up at an angle to the screen. 3D Reform allows you to correct for distortions not obtainable with ordinary horizontal and vertical keystone correction which increases your projector placement options.



3D Reform Technology

VORTEX Technology Plus™– breakthrough image processing technology improves white balance, color accuracy, dynamic range and varying levels of black in an image.



original image

after VORTEX Technology Plus color adjustment

original image

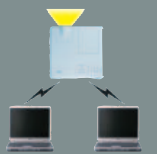
after VORTEX Technology Plus white balance correction

networking and source.

Control and monitor your conference room or classroom. Using NEC's Dynamic Image Utility™ with an optional wireless or wired networking PC card, asset management is available down the hall or across the country. With the ImageXpress™ utility, it's possible to transfer data from the computer to the screen seamlessly or over the company network.



monitor multiple projectors from one computer



transfer data from multiple computers via wireless connection



project data to multiple projectors via wireless connection

Model #	MT1075	MT1065
Panel Resolution	1024x768 pixels up to UXGA with Advanced AccuBlend	
Lens	Power zoom and Power AUTO focus F=1.74-2.18, f=30.8-41.6mm	
Brightness (ANSI lumens)	4200 Normal 3400 Eco-Mode 2000 Super Eco-Mode	3400 Normal 2700 Eco-Mode 1900 Super Eco-Mode
Lamp life (up to)	3000H Eco-Mode, 2000H normal, 4000H Super Eco-Mode w/optional long life lamp	
Image Size (diagonal)	25-500 inches	
Projection Distance	2.46-68.9ft, 0.75-21m	
Projection Angle	TELE: 10.3 – 10.7 degree; WIDE: 13.7 – 14.4 degree	
Fan Noise	Normal <39; Eco-Mode <34; Super Eco-Mode <29	
Inputs	1 DVI-D, 1 5-BNC, 1 RGB, 1 S-Video, 1 Video, 2 PC Card, 2 L/R RCA Audio, 3 Stereo Mini Audio, 1 USB A, 1 Remote	
Outputs	1 RGB, 1 Stereo Mini Audio, 1 L/R RCA Audio, 1 USB B, 1 9-Pin PC Control, 1 Mouse	
Video Compatibility	NTSC, NTSC 4.43, PAL, PAL-M, PAL-N, PAL-60, SECAM, HDTV: 1080p, 1080i, 720p, SDTV: 480p, 480i (w/optional cable), Y/Cb/Cr component (w/optional cable)	
Dimensions	13.15x12.72x4.53, 334x323x115mm (Not including protrusions)	
Net Weight	13 lbs / 5.9 kg	

NEC's full line of projectors and plasmas display crystal clear images every time.

- **Broadest line of product.** NEC offers over 20 large screen displays to support any application.
- **Crystal clear images.** All NEC displays show crystal clear images every time. Research says that NEC projectors and plasmas are known to display the best images and NEC has earned numerous awards and accolades for image quality and performance.
- **Works every time.** NEC displays are rock solid. A recent market study* from TFC Info showed NEC projectors and plasmas are known to have among the highest quality in the industry.
- **All NEC projectors and plasmas** are backed by industry leading service and support programs. NEC is a leader in product quality/reliability, after-sales support and return/repair programs as reported in the 2003 Pacific Media Reseller's Survey*.

* TFC Info and Pacific Media Associates are high-tech market research firms that specialize in providing information on large-screen display products, markets, and manufacturers.

NEC



cobranding area

The name you trust. The reliability you deserve. NEC is a global 100 company founded in 1899 with over \$40 billion in revenue and 130,000 employees. NEC is also the world's #3 patent holder with over 70,000 patents worldwide.

For more information, call 800.632.4636 or visit www.necvisualsystems.com

NEC is a registered trademark of NEC Corporation. All other trademarks are the property of their respective owners. All specifications and programs are subject to change without notice. ©2004 NEC Solutions (America) Inc.

NEC Solutions (America), Inc.
Visual Systems Division
1250 Arlington Heights Rd., Suite 400
Itasca, IL 60143-1248

NEC 060408